

# Whitby Mall

1615 Dundas Street East  
Whitby, ON L1N 2L1



**OFFICE SPACES  
AVAILABLE**



## Whitby Mall

---

Situated just east of Toronto, in the rapidly growing town of Whitby, is Whitby Mall. This mixed-use centre features a **49,000 square foot Sobeys and other retailers below three levels of office space**. It sits adjacent to First Capital's Thickson Place, creating a synergy that provides a convenient shopping experience for the surrounding neighbourhood. It caters to a population of over **150,000 people within a five-kilometre radius**, with an average household income of **\$112,082**.

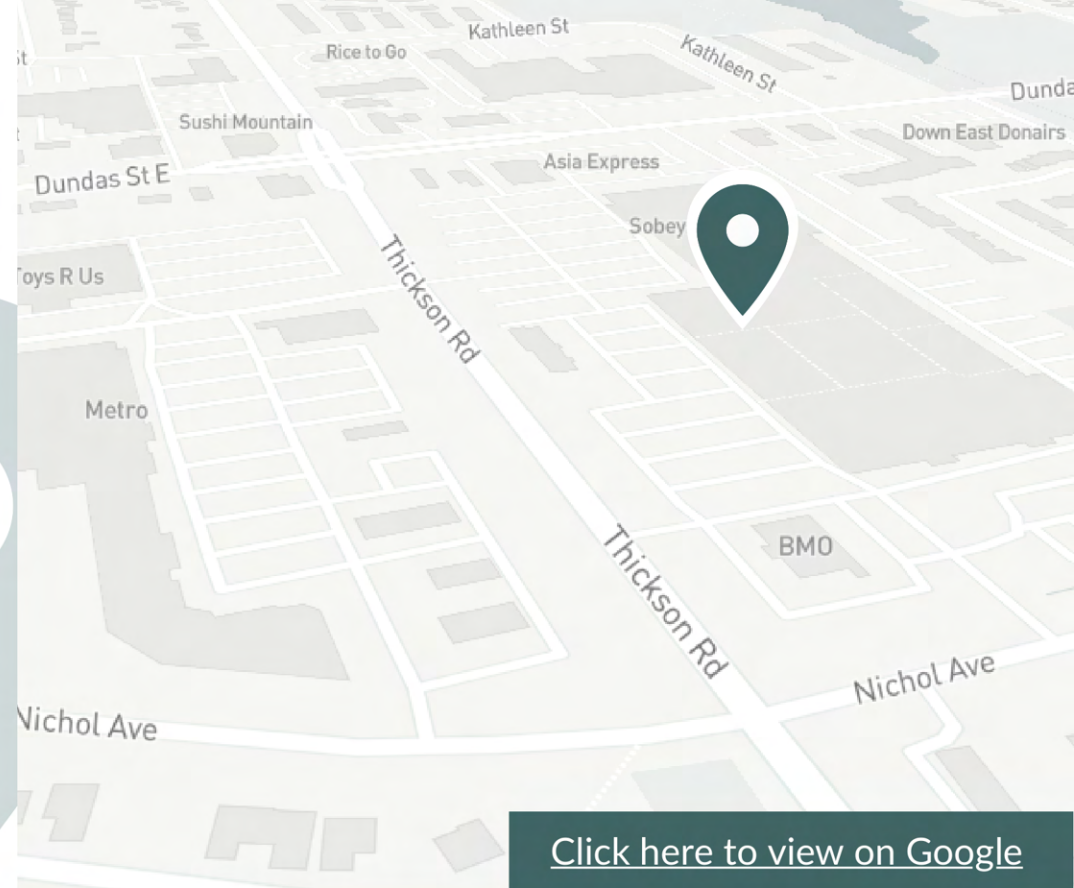




# About the Location

Whitby Mall is ideally located at the busy intersection of Dundas St E and Thickson Rd. It features a dynamic mix of tenants on the property, including Sobey's, Lastman's Bad Boy, McDonald's, and BMO. Just across the street is Thickson Place, which is home to a Metro, Dollarama, LCBO and Healthy Planet.

It is easily accessible for commuters of all kinds, just a 4-minute drive to Highway 401 and an 8-minute drive to Highway 412, with ample outdoor parking. It also features an on-site Durham Region Transit bus stop, which directly connects to the Whitby Go Train Station via the 905 bus route.



[Click here to view on Google](#)





# Neighborhood Features



4-MINUTE DRIVE TO  
HWY 401



8-MINUTE DRIVE TO  
HWY 412



ON-SITE DURHAM REGION  
TRANSIT BUS STOP



Population (5km)  
150,552



Households (5km)  
56,268



Household Income (5km)  
\$112,082



Traffic count  
37,200 (ADDT)



Nearest Bus line  
905 route 905 at Thickson - On site



Nearest Rail line  
Whitby GO Station - 4.5km

## Nearby amenities and tenants







Dundas St

900

metro

Sobeys

Whitby Mall

BMO

Thickson Rd

905

Landmark  
CENTRES

GoodLife  
FITNESS

HWY 401



# Leasing Opportunities

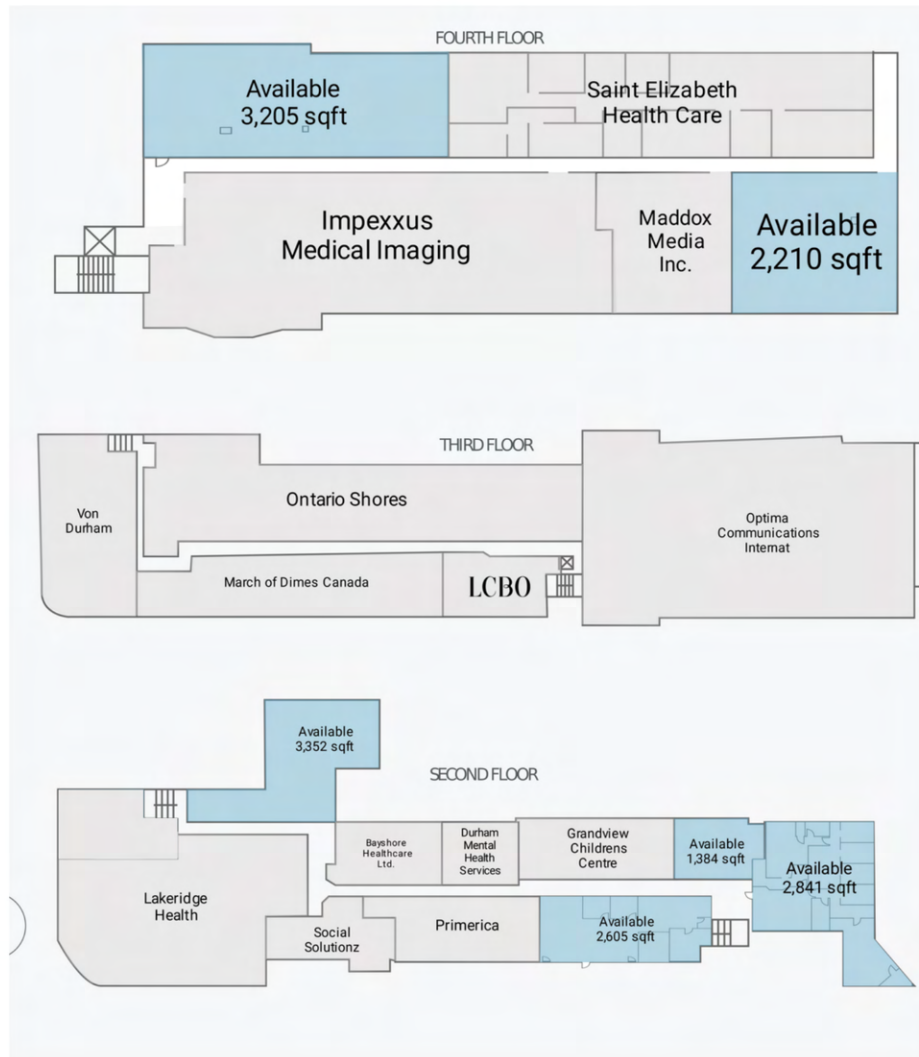
Rental Rates: upon request

Tower	Suite Number	Unit Number	Floor	SF	*Additional Rent (PSF)	Availability
West	<b>210</b>	AO2013A	2	2,605	\$13.17	Immediately Available
West	<b>205</b>	AO2008A	2	1,384	\$13.17	TBD
West	<b>207</b>	AO2009A	2	2,841	\$13.17	Immediately Available
West	<b>215</b>	AO2014A	2	3,352	\$13.17	immediately Available
West	<b>404</b>	AO4002B	4	2,210	\$13.17	Immediately Available
West	<b>406</b>	AO4004A	4	3,205	\$13.17	Immediately Available
East	<b>201</b>	AO2001A	2	753	\$13.17	Immediately Available
East	<b>202</b>	AO2003B	2	911	\$13.17	Immediately Available
East	<b>E-210</b>	AO2002A	2	1,286	\$13.17	TBD
East	<b>300</b>	AO2004A	3	9,724	\$13.17	Immediately Available

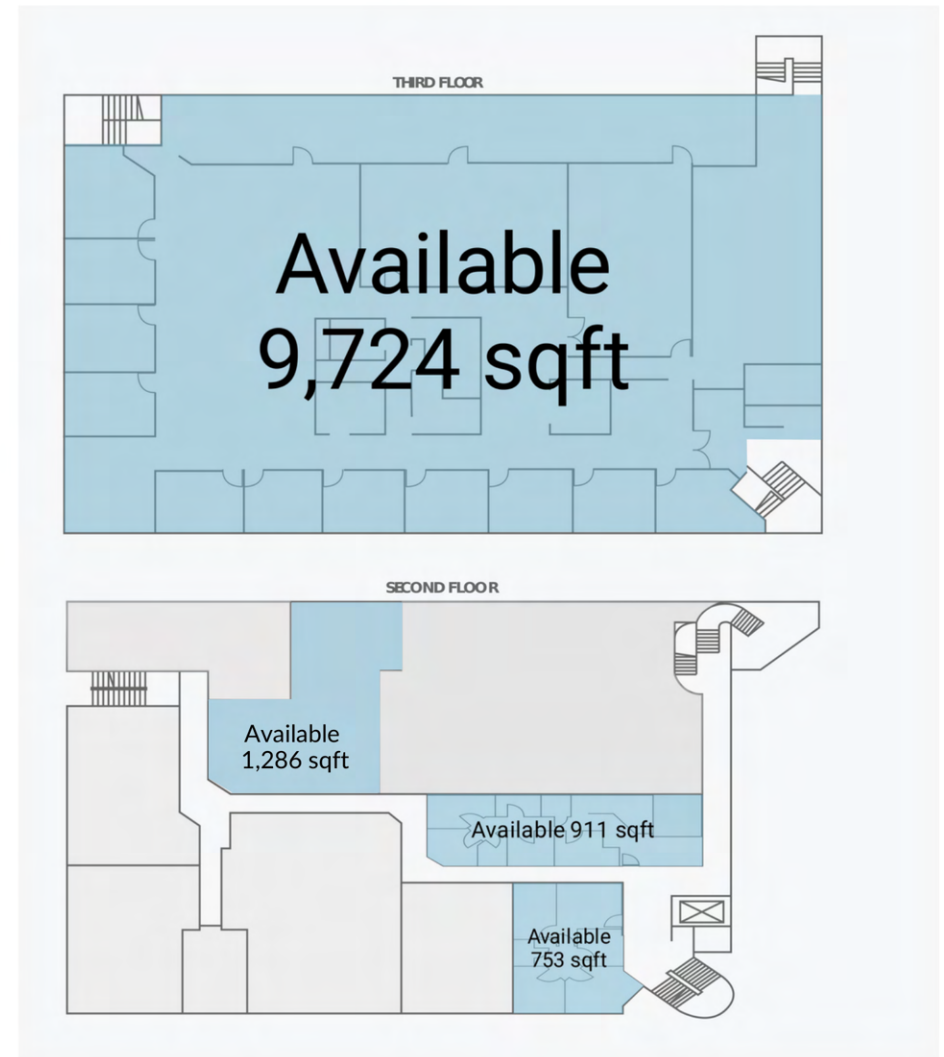


# Site Plan

## West



## East

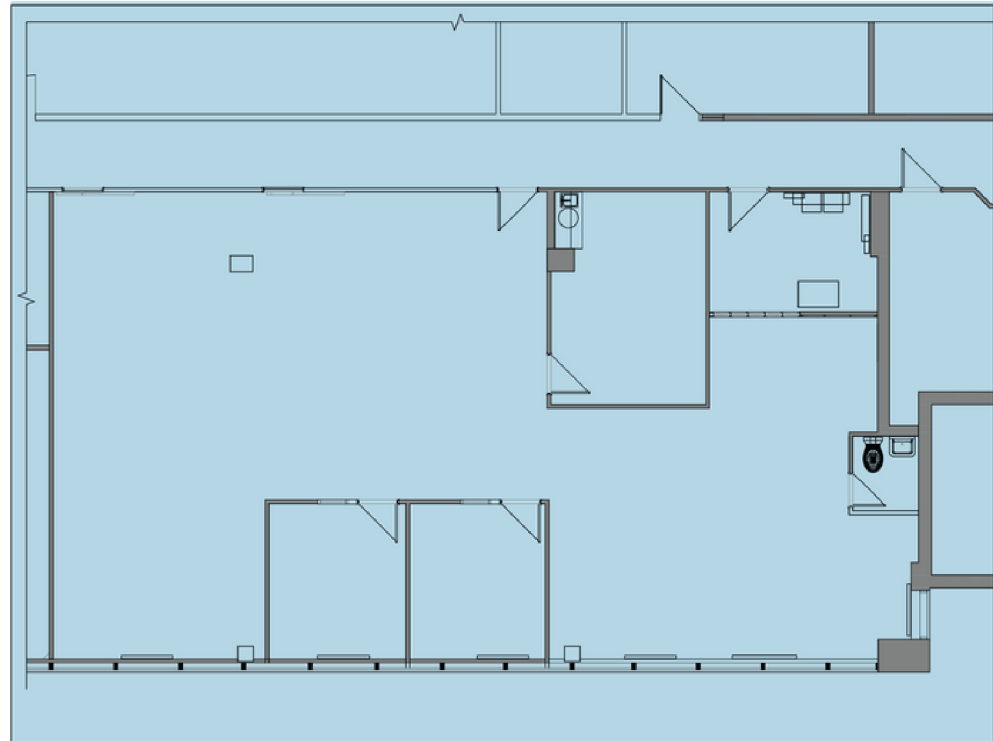




# Suite 210

2,605 SF

<b>Tower</b>	West
<b>Floor</b>	2
<b>Unit Number</b>	A02013A
<b>Additional Rent (psf)*</b>	\$13.17
<b>Availability</b>	Immediately Available
<b>Additional Information</b>	Built out office with in suite restroom





# Suite 205

1,384 SF

<b>Tower</b>	West
<b>Floor</b>	2
<b>Unit Number</b>	A02008A
<b>Additional Rent (psf)*</b>	\$13.17
<b>Availability</b>	TBD
<b>Additional Information</b>	Built out office with in suite restroom

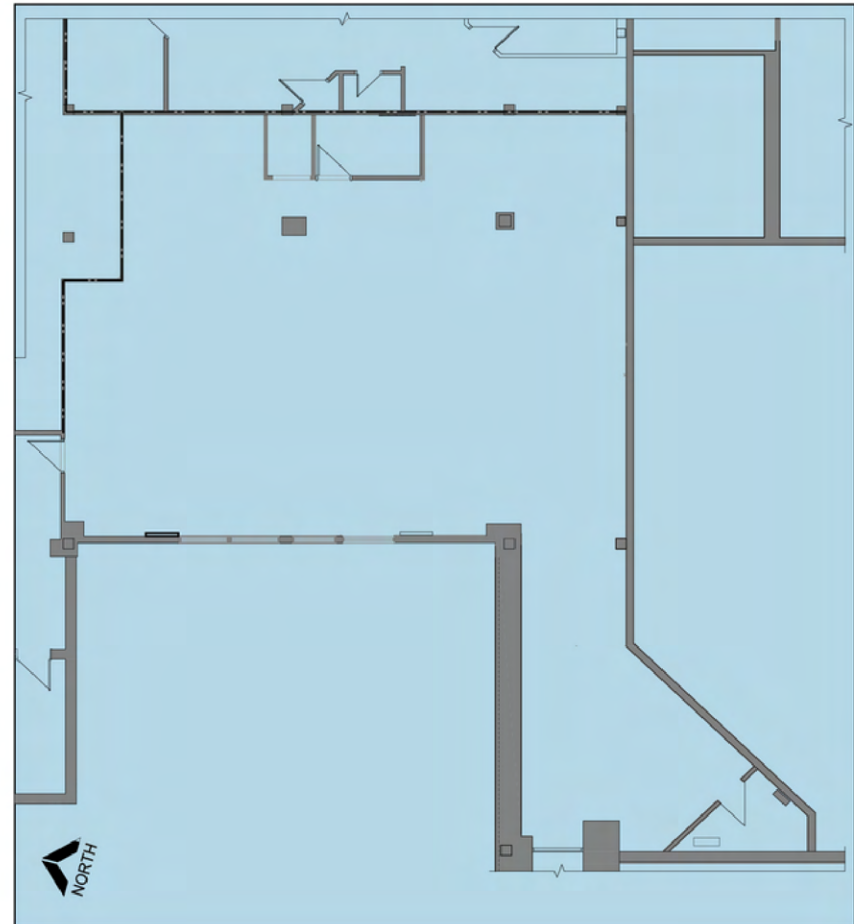




# Suite 207

2,841 SF

<b>Tower</b>	West
<b>Floor</b>	2
<b>Unit Number</b>	A02009A
<b>Additional Rent (psf)*</b>	\$13.17
<b>Availability</b>	Immediately Available
<b>Additional Information</b>	Built out office

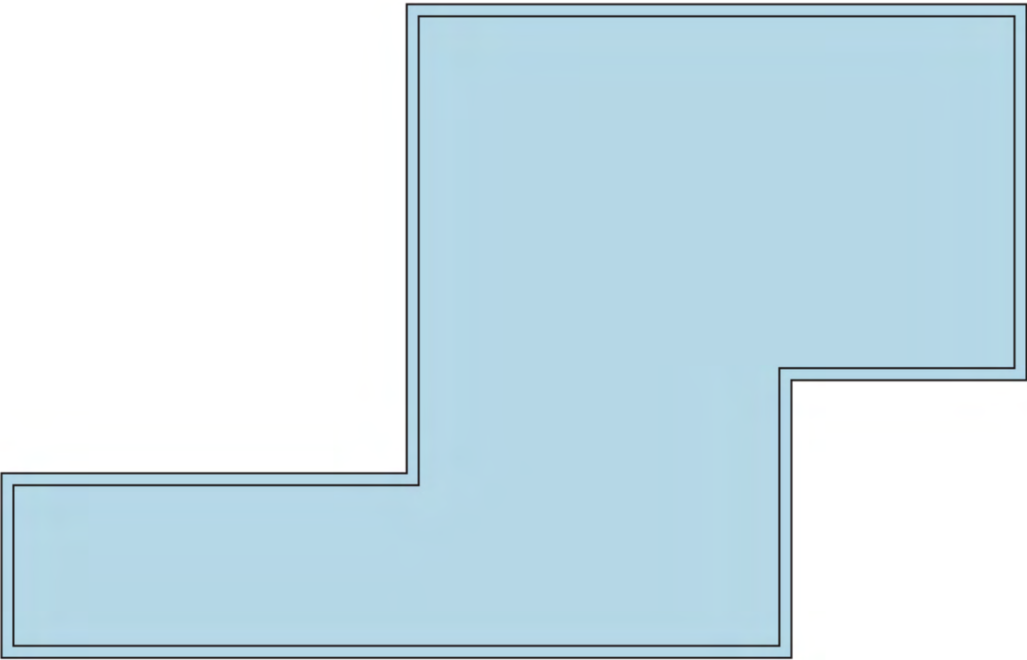




# Suite 215

3,352 SF

<b>Tower</b>	West
<b>Floor</b>	2
<b>Unit Number</b>	AO2014A
<b>Additional Rent (psf)*</b>	\$13.17
<b>Availability</b>	Immediately Available
<b>Additional Information</b>	Built out office

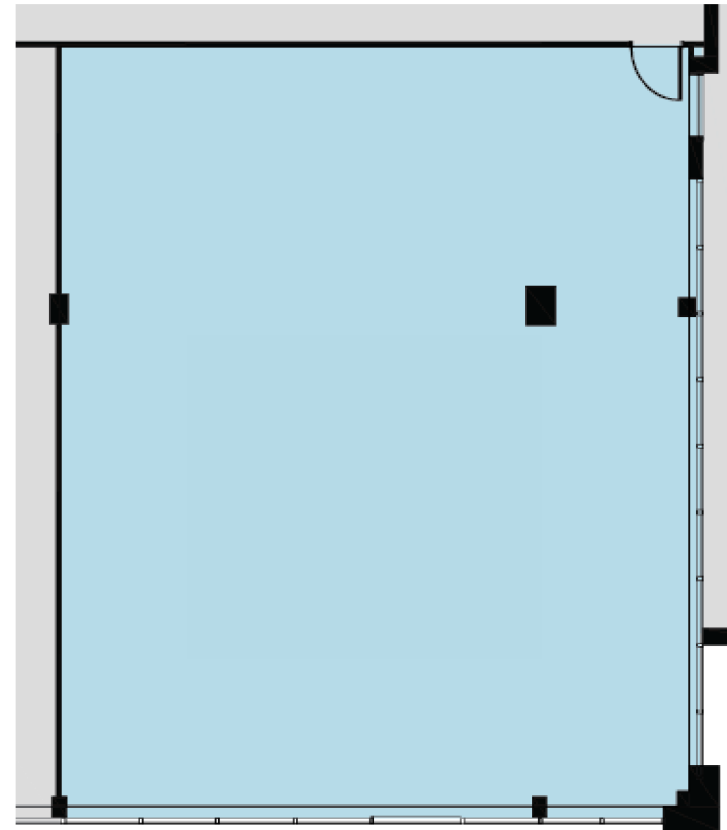




# Suite 404

2,210 SF

<b>Tower</b>	West
<b>Floor</b>	4
<b>Unit Number</b>	AO4002B
<b>Additional Rent (psf)*</b>	\$13.17
<b>Availability</b>	Immediately Available
<b>Additional Information</b>	Built out office

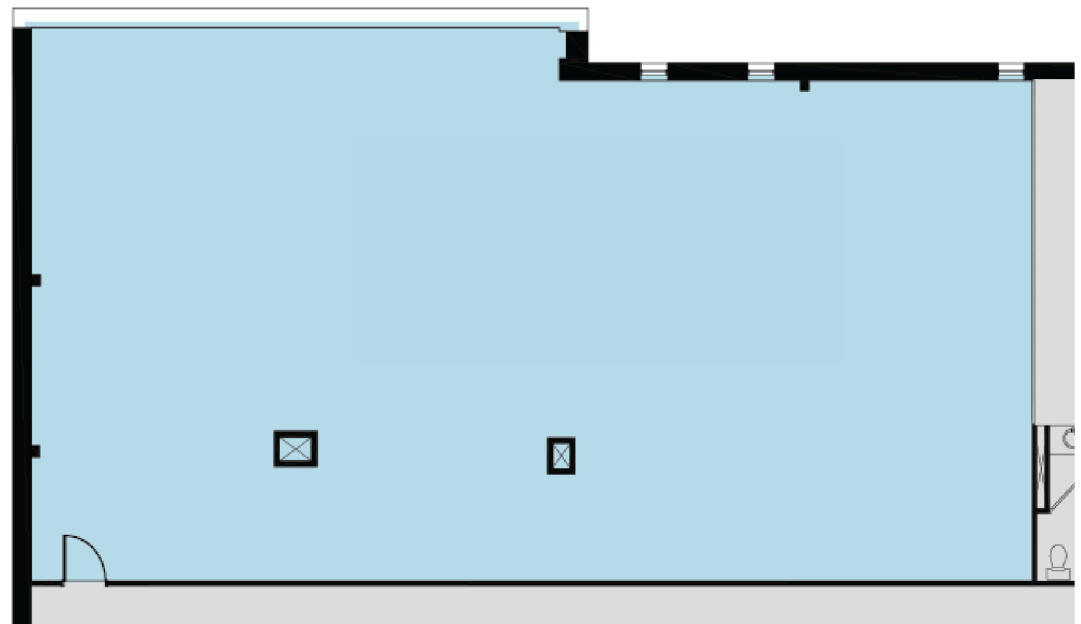




# Suite 406

3,205 SF

<b>Tower</b>	West
<b>Floor</b>	4
<b>Unit Number</b>	AO4004A
<b>Additional Rent (psf)*</b>	\$13.17
<b>Availability</b>	Immediately Available
<b>Additional Information</b>	Divisible

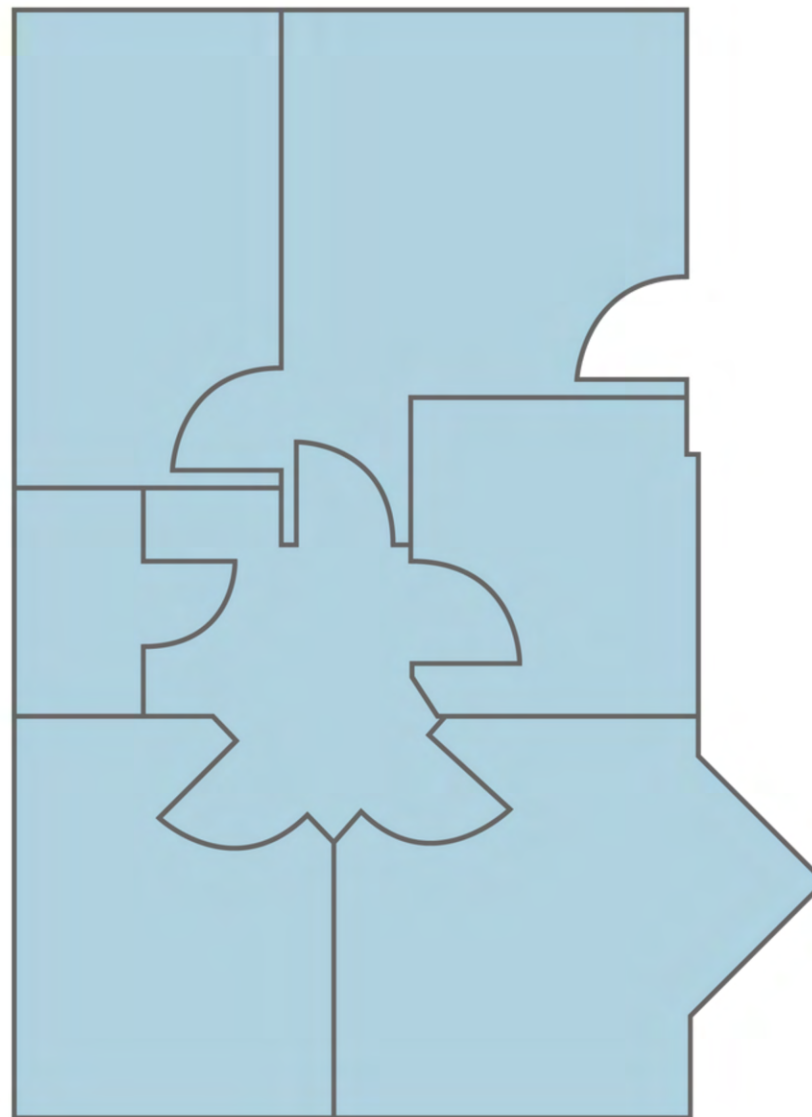




# Suite 201

753 SF

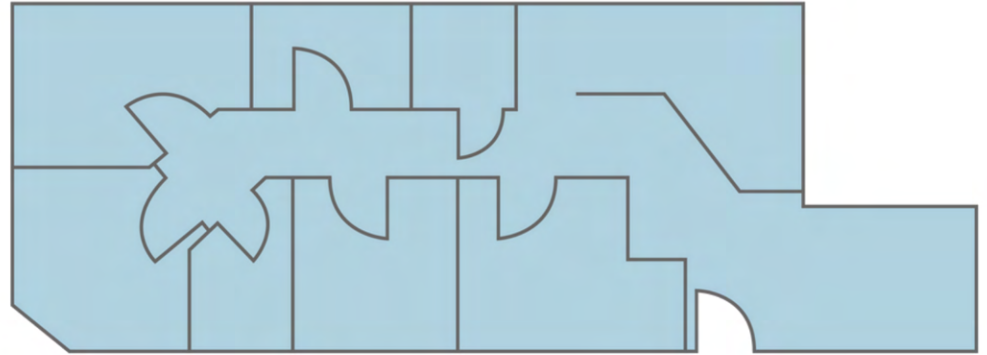
<b>Tower</b>	East
<b>Floor</b>	2
<b>Unit Number</b>	AO2001A
<b>Additional Rent (psf)*</b>	\$13.17
<b>Availability</b>	Immediately Available
<b>Additional Information</b>	Built out office



# Suite 202

911 SF

<b>Tower</b>	East
<b>Floor</b>	2
<b>Unit Number</b>	AO2003B
<b>Additional Rent (psf)*</b>	\$13.17
<b>Availability</b>	Immediately Available
<b>Additional Information</b>	Built out office

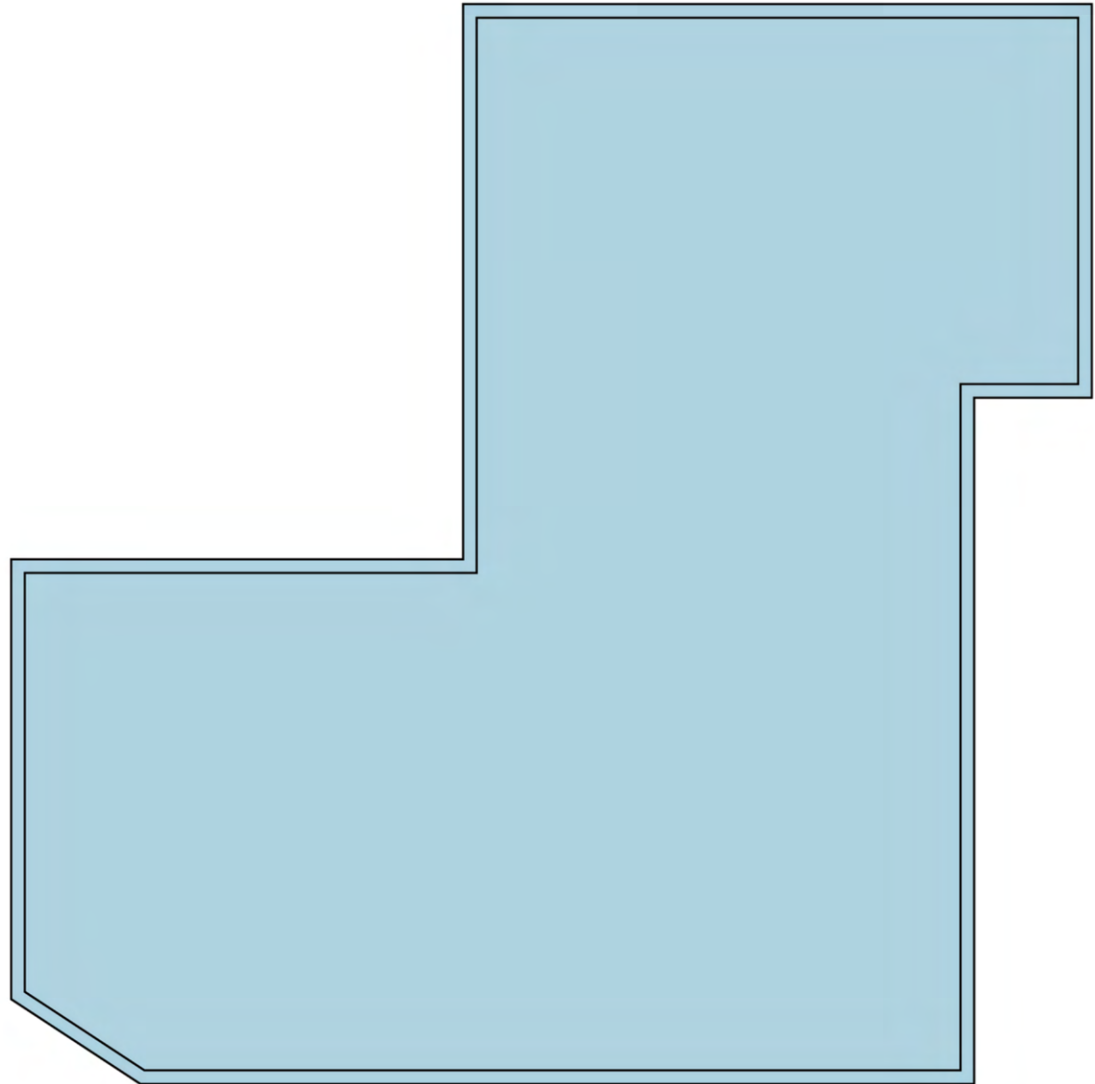




# Suite E-210

1,286 SF

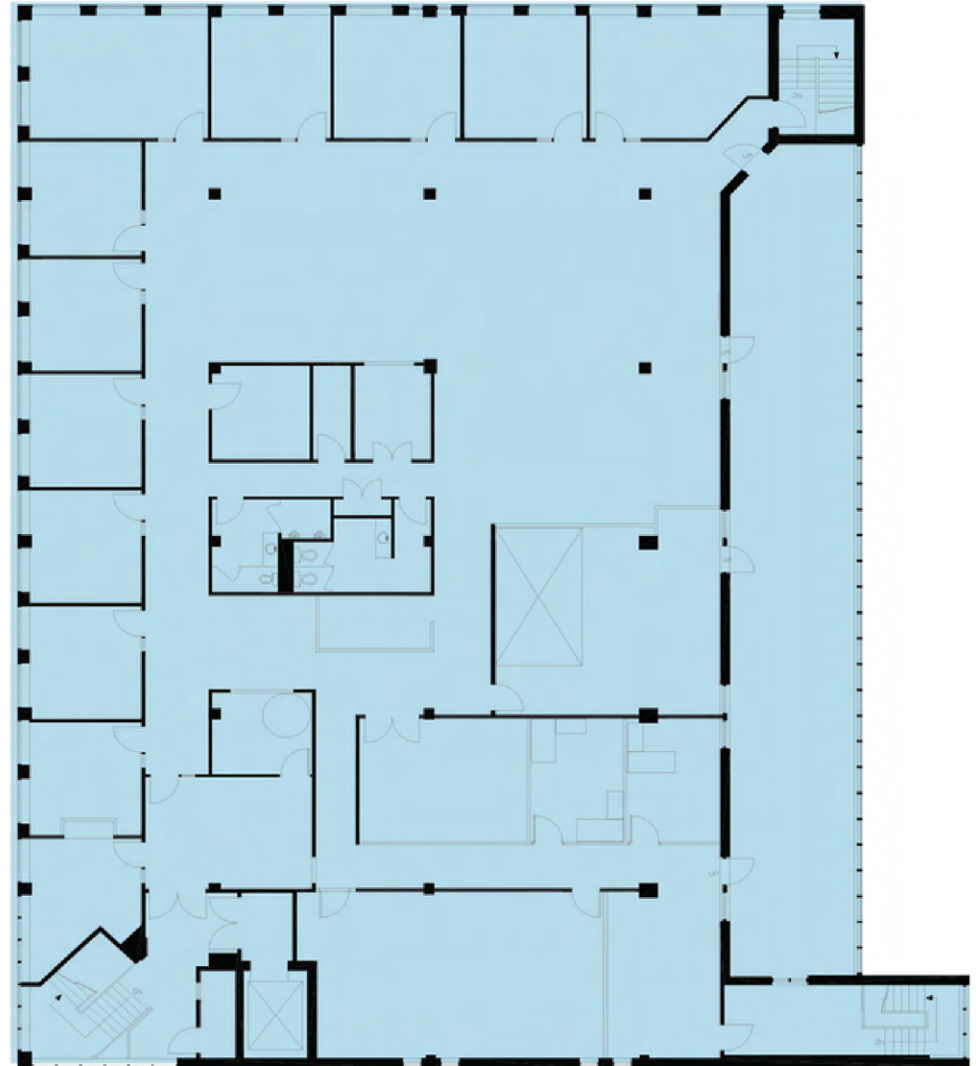
<b>Tower</b>	East
<b>Floor</b>	2
<b>Unit Number</b>	AO2002A
<b>Additional Rent (psf)*</b>	\$13.17
<b>Availability</b>	TBD
<b>Additional Information</b>	Built out office



# Suite 300

9,724 SF

<b>Tower</b>	East
<b>Floor</b>	3
<b>Unit Number</b>	AO2004A
<b>Additional Rent (psf)*</b>	\$13.17
<b>Availability</b>	Immediately Available
<b>Additional Information</b>	Built out office







**Jon Gauntlett**  
Leasing Manager  
First Capital REIT  
[jon.gauntlett@fcr.ca](mailto:jon.gauntlett@fcr.ca)  
(416) 481-3584

**Daniel Baxa**  
Broker  
Intercity Realty Inc.  
[www.danielbaxa.ca](http://www.danielbaxa.ca)  
(416)-899-6515

**Lou Grossi**  
Broker of Record  
Intercity Realty Inc.  
[lougrossi@intercityrealty.com](mailto:lougrossi@intercityrealty.com)  
(416)-732-5733